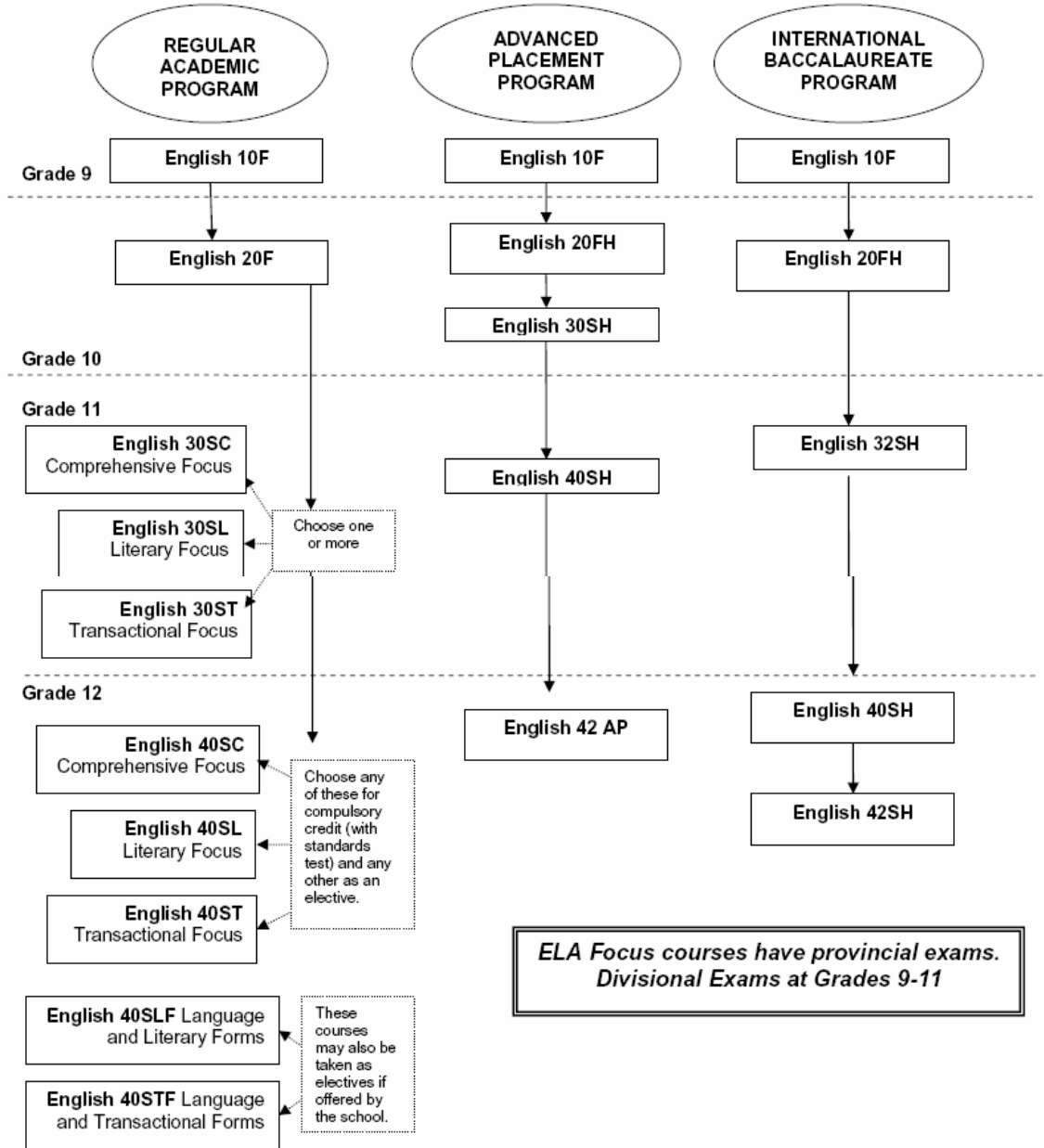


# English Language Arts

\* Students may change program at any time.



### **GRADE 9 ENGLISH - EN10F**

This is an integrated, theme-based course designed to provide students with a solid foundation of literacy skills, knowledge, and learning strategies. The course emphasizes reading comprehension, personal and critical response, and interpretation of a variety of text forms. Students also learn to collect, organize, and synthesize information through research and inquiry processes.

In the 10F course, students express their ideas using the six English language arts of reading, writing, listening, speaking, viewing, and representing. Particular emphasis is placed on written communication, including exploration, examination, and analysis of the structure of sentences, paragraphs, essays, and longer fiction and non-fiction text.

### **GRADE 10 ENGLISH - EN20F**

This is the second of the two foundation courses and completes the literacy skills, knowledge, and learning strategies begun in English 10F. The course continues to emphasize reading comprehension, personal and critical response, and interpretation of various text forms; text forms include short prose, poetry, novels, and Shakespearean plays. Students continue learning to collect, organize, and synthesize information through research and inquiry processes. Written communication skills continue to be a focus in EN20F. Students create various texts to demonstrate their ability to address a specific audience, for a specific context and purpose.

### **FOCUS COURSES – GRADE 11 AND 12**

#### **Preamble**

In grade 11 and 12, students choose one of three English curriculum focus courses to meet graduation requirements. These courses include the Literary Focus, the Transactional Focus, and the Comprehensive Focus. The Literary courses focus on aesthetic uses of language; they deal with literary texts such as short stories, poetry, and dramas. The Transactional courses focus on pragmatic or practical applications of language; they deal with texts that have a clearly identified purpose, context, and audience. The Comprehensive Focus includes a balance of both literary and transactional texts.

All of the three focuses satisfy university entrance requirements. Students at the grade 12 level are required to write the Provincial ELA Standards Test, usually at the end of the first semester.

#### **GRADE 11 COMPREHENSIVE FOCUS - EN30SC**

This course addresses the learning outcomes identified by the provincial curriculum for the grade 11 Comprehensive Focus. Students read and respond to a balance of pragmatic and aesthetic texts. For example, transactional or non-fiction texts are used for practical, every-day purposes, while literary texts are used for aesthetic, expressive, and creative purposes.

#### **GRADE 11 LITERARY FOCUS - EN30SL**

This course addresses the learning outcomes identified by the provincial curriculum for the grade 11 Literary Focus. Students read and respond primarily to literary or aesthetic text forms, including poetry, short prose, Shakespearean plays, and novels.

#### **GRADE 11 TRANSACTIONAL FOCUS – EN30ST**

This course addresses the learning outcomes identified by the provincial curriculum for the grade 11 Transactional Focus. Students read and respond primarily to transactional, pragmatic, or functional texts – texts required to conduct every-day transactions. Students learn the conventions of various transactional forms, and they learn to focus their communication for a particular purpose, context, and audience.

### **GRADE 12 COMPREHENSIVE FOCUS - EN40SC**

This course addresses the learning outcomes identified by the provincial curriculum for the grade 12 Comprehensive Focus. Students read and respond to a balance of pragmatic and aesthetic texts at a more advanced level than the grade 11 course. The grade 12 course incorporates a variety of both fiction and non-fiction text forms, with equal time allotted to each.

### **GRADE 12 LITERARY FOCUS - EN40SL**

This course addresses the learning outcomes identified by the provincial curriculum for the grade 12 Literary Focus. Students read and respond primarily to literary or aesthetic text forms - including poetry, short prose, Shakespearean plays, and novels - at a more complex and deeper level than at the grade 11 level.

### **GRADE 12 TRANSACTIONAL FOCUS -EN40ST**

This course addresses the learning outcomes identified by the provincial curriculum for the grade 12 Transactional Focus. Students read and respond primarily to transactional, pragmatic, or functional texts at a more advanced level than at the grade 11 level. Students learn authentic applications of various transactional forms while continuing to focus their communication for a particular purpose, context, and audience.

### **EN40SLF ENGLISH LANGUAGE AND LITERARY FORMS EN40SLF**

This course provides for an in-depth examination and study of language forms, various genres in literature with a specific emphasis on the cultural mosaic contained in literature. Critical analysis of such literary forms as the short story, novel, poetry and drama are undertaken with the express purpose of determining what makes each literature type unique. For instance, what makes a novel what it is and/or what devices of language might an author use in the composition of the novel?

### **EN40STF ENGLISH LANGUAGE AND TRANSACTIONAL FORMS EN40STF**

In some respects, this course builds on the compulsory, transactional course (EN40ST) by focusing on several distinct transactional forms, namely those most frequently associated with the world of business (eg. business letter, report, interview), education (eg. essay forms, analysis and synthesis) research (eg. data collection and interpretation), journalism (eg. the five W's), consumerism and the media (eg. advertising, propaganda) and social interaction (eg. legalese, cultural diversity).

### **EN40SLF ENGLISH LANGUAGE AND LITERARY FORMS**

(Language, Literature, and Culture) This course provides for an in-depth examination and study of language forms, various genres in literature with a specific emphasis on the cultural mosaic contained in literature. Critical analysis of such literary forms as the short story, novel, poetry and drama are undertaken with the express purpose of determining what makes each literature type unique. For instance, what makes a novel what it is and/or what devices of language might an author use in the composition of the novel?

### **EN40STF ENGLISH LANGUAGE AND TRANSACTIONAL FORMS (Language, Media, and Culture)**

This course focuses on several distinct transactional forms, namely those most frequently associated with the world of business (eg. business letter, report, interview), education (eg. essay forms, analysis and synthesis), research (eg. data collection and interpretation), journalism (eg. the five W's), consumerism and the media (eg. advertising, propaganda) and social interaction (eg. legalese, cultural diversity).